

112 Geog. 54

ASIA'S LANDS AND PEOPLES

A Geography of One-third of the Earth and Two-thirds of Its People

COMPUTERISED

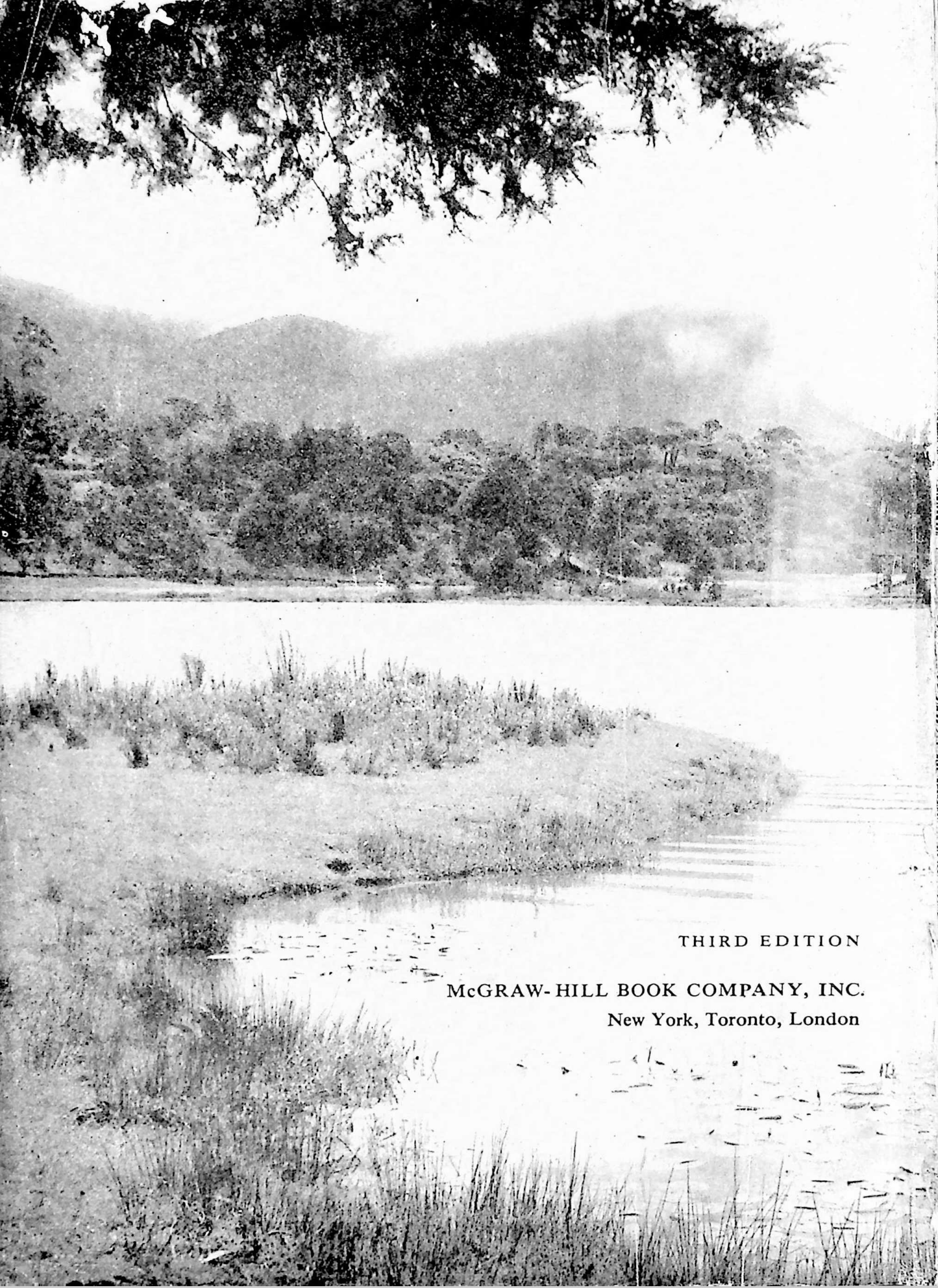


**MANGALDAI COLLEGE
LIBRARY**

Accession No ... 54A
Class No ... 915
Book No ... CRE



G54A
MANGALDAI COLLEGE CENTRAL LIBRARY



THIRD EDITION

McGRAW-HILL BOOK COMPANY, INC.

New York, Toronto, London

ASIA'S LANDS AND PEOPLES

A Geography of One-third of the Earth and Two-thirds of Its People

George B. Cressey

Maxwell Professor of Geography

Syracuse University

COMPUTERISED



G54A

MANGALDAI COLLEGE CENTRAL LIBRARY



COMPUTERISED

ASIA'S LANDS AND PEOPLES

Copyright, 1944, 1951, by McGraw-Hill, Inc.

All Rights Reserved

Copyright © 1963 by McGraw-Hill, Inc.

All Rights Reserved. Printed in the United States of America.

This book, or parts thereof, may not be reproduced in any form without permission of the publishers.

Library of Congress Catalog Card Number 62-22087

456789—QB—9876

Title page photograph: Eliya Lake, Nuwara Eliya, Ceylon.
(*Courtesy Trans World Airlines, Inc.*)

CONTENTS

PREFACE	vii
<i>A The Continent of Asia</i>	1
1 TWO BILLION PEOPLE	2
Population Patterns, 2 Two Square Miles, 7 Ethnic Groups, 11 Political Patterns, 12 References on Asia, 17	
2 ASIAN LANDSCAPES	18
The Pattern of Eurasia, 18 Surface Configuration, 19 Climatic Conditions, 24 Natural Vegetation, 30 Mineral Resources, 33	
3 THE REALMS OF ASIA	35
Physical Realms, 35 Political Realms, 47 Geostrategy in Asia, 52	
<i>B The East Asian Realm</i>	57
4 CHINA'S CULTURAL PATTERNS	58
The Chinese Landscape, 58 Population Problems, 62 Political Framework, 67 Communist Developments, 70 Historical Backgrounds, 73 References on China, 75	
5 CHINA'S PHYSICAL FOUNDATIONS	78
Geological Background, 78 Land Forms, 81 Climatic Contrasts, 87 Natural Vegetation, 92 Types of Soil, 96 Mineral Resources, 100	
6 CHINA'S ECONOMIC POTENTIALS	105
Intensive Land Use, 105 Agricultural Regions, 109 Prospects for Food, 113 Industrial Prospects, 115 China's Economic Problems, 119	

7	REGIONS OF NORTH CHINA	122
	Geographic Regions, 122 The Yellow Plain, 124 The Shantung Hills, 131 Loessland, 131 The Manchurian Plain, 134 The Eastern Manchurian Uplands, 137 The Western Manchurian Uplands, 138	
8	REGIONS OF SOUTH CHINA	139
	South China, 139 The Yangtze Plain, 140 The Szechwan Basin, 147 The Central Mountain Belt, 150 The South Yangtze Hills, 151 The Southeastern Coast, 153 The Canton Hinterland, 154 The Southwestern Uplands, 158 Hainan, 159	
9	REGIONS OF OUTER CHINA	160
	Inner Asia, 160 Inner Mongolia, 161 Sinkiang, 164 Tibet, 168	
10	TAIWAN	174
	Nationalist China, 174 The Taiwan Landscape, 176 Laboratory for Asia? 179 References on Taiwan, 180	
11	MONGOLIA	181
	The Mongolian People's Republic, 181 Life in the Desert, 183 Gobi Land Forms, 185 References on Mongolia, 187	
12	THE TWO KOREAS	188
	The Korean Peninsula, 188 The Physical Environment, 191 Livelihood, 194 The Two Koreas, 197 References on Korea, 197	
13	JAPAN'S PROSPECTS	198
	The Japanese Landscape, 198 Geographical History, 202 Population Problems, 207 Location, 209 References on Japan, 211	
14	THE JAPANESE ENVIRONMENT	213
	Land Forms, 213 Climate, 218 Forests and Soils, 221 Mineral Resources, 223	
15	LIVELIHOOD IN JAPAN	226
	Agriculture, 226 Fishing, 230 Economic Developments, 232 International Relations, 236	

16	REGIONS OF JAPAN	238
	The Kanto Plain, 238 Central Honshu, 242 Western Honshu and the Inland Sea, 244 Shikoku, 249 Kyushu, 249 Northern Honshu, 251 Hokkaido, 252	
	<i>C The Southeast Asian Realm</i>	<i>257</i>
17	THE INDO-PACIFIC REALM	258
	Peninsulas and Islands, 258 Population Patterns, 262 Historical Development, 264 References on Southeast Asia, 268	
18	THE SOUTHEAST ASIAN BASE	269
	Structure and Surface, 269 Climate, 273 Vegetation, 276 Soil, 279	
19	LIVELIHOOD IN SOUTHEAST ASIA	282
	Land Use, 282 Mineral Potentials, 287 International Trade, 289 Geographic Provinces, 290	
20	THE INDOCHINA STATES	293
	Historical Backgrounds, 293 Two Rivers, One Cordillera, 295 The Viet Nams, 298 Cambodia, 302 Laos, 304 References on the Indochina States, 306	
21	THAILAND	307
	The Land of the Thai, 307 Thailand's Framework, 309 Central Thailand, 312 Northern Thailand, 315 Northeastern Thailand, 316 Southern Thailand, 317 References on Thailand, 318	
22	BURMA	319
	The Happy Land, 319 Burmese Economy, 321 Three Villages, 325 The Irrawaddy Valley, 328 The Burma Mountains, 330 The Shan Plateau, 331 The Tenasserim Coast, 332 References on Burma, 332	
23	MALAYSIA	333
	The Malay Peninsula, 333 People and Politics, 338 Western Borneo, 341 References on Malaysia, 343	

24	INDONESIA	345
	People and History, 345 Climate and Crops, 348 The Geological Base, 350 Java, 352 The Outer Islands, 355 References on Indonesia, 357	
25	THE PHILIPPINES	358
	A Historical Preface, 358 The Physical Base, 361 Crops and Minerals, 363 Luzon, 366 The Visayan Islands, 369 Mindanao, 370 References on the Philippines, 371	
	D <i>The South Asian Realm</i>	373
26	THE SUBCONTINENT	374
	Cultural Contributions, 374 Historical Developments, 378 International Relations, 381 Population Problems, 384 References on South Asia, 388	
27	INDO-PAKISTAN LAND AND RESOURCES	389
	The Land Base, 389 Monsoon Climate, 396 River Problems, 402 Natural Vegetation, 405 Soils, 410	
28	INDO-PAKISTAN PEOPLE AND LIVELIHOOD	412
	Agriculture, 412 Industry and Resources, 418 Communications, 424 Planned Economy, 425	
29	REGIONS OF NORTH INDIA	428
	Indian Prospects, 428 The Ganges Valley, 432 The Brahmaputra Valley, 438 The Assam Mountains, 440 The Himalayan Highlands, 440 References on India, 443	
30	REGIONS OF SOUTH INDIA	444
	The West Coast, 444 The Black Soil Plateau, 448 The Northern Uplands, 451 The Eastern Uplands, 452 The Southern Peninsula, 453	
31	PAKISTAN	456
	Political Backgrounds, 456 Economic Potentials, 459 The Ganges- Brahmaputra Delta, 461 The Indus Valley, 462 The Thar Desert, 465 The Western Frontier, 466 References on Pakistan, 468	

32	CEYLON	469
	Tropical Island, 469 Regional Contrasts, 472 References on Ceylon, 474	
	<i>E The Southwest Asian Realm</i>	<i>477</i>
33	SOUTHWESTERN MOUNTAINS, DESERTS, AND OASES	478
	Asian Crossroads, 478 Mediterranean Climate, 481 Mountain Pattern, 483 Desert Areas, 485 The Fertile Crescent, 488 Irrigation Agriculture, 491 References on Southwest Asia, 494	
34	PEOPLE AND LAND IN SOUTHWEST ASIA	495
	Historical Backgrounds, 495 Population Patterns, 498 Political Problems, 501 Swasian Regions, 503	
35	RESOURCES AND POTENTIALS OF SOUTHWEST ASIA	507
	Mineral Wealth, 507 Petroleum, 511 Water Power, 514 Accessibility, 515 Economic Potentials, 516	
36	TURKEY	519
	The Physical Landscape, 519 Land Use, 522 Population Patterns, 524 Turkish Villages, 526 Industrial Prospects, 527 References on Turkey, 529	
37	THE ARABIAN PENINSULA	530
	The Political Areas, 530 The Arabs, 532 Desert Landscapes, 536 Highland Landscapes, 538 Arabian Regions, 539 References on Arabia, 542	
38	THE LEVANT STATES	543
	Crossroads Location, 543 The Physical Setting, 544 Lebanon, 546 Syria, 548 Jordan, 550 Israel, 551 References on the Levant States, 554	
39	IRAQ	556
	Twin Rivers, 556 The People of Iraq, 559 Climate and Land Use, 561 Development Potentials, 563 References on Iraq, 565	

40	IRAN	566
	History and Forecast, 566 Geographic Regions, 568 Water and Crops, 571 Economic Potentials, 574 References on Iran, 576	
41	AFGHANISTAN	577
	Three Landscapes, 577 Livelihood, 582 Political Problems, 583 References on Afghanistan, 584	
	<i>F The Soviet Realm</i>	<i>587</i>
42	SOVIET POTENTIALS	588
	A Geographic Preface, 588 Historical Geography, 594 Socialist Economy, 597 Political Structure, 599 Soviet Nationalities, 601 References on the Soviet Union, 603	
43	SOVIET LANDSCAPES	606
	Geological Foundations, 606 Land Forms, 609 Climatic Problems, 615 Natural Vegetation, 620 Soils, 624	
44	SOVIET MINERAL RESOURCES	625
	The Mineral Prospect, 625 Power, 627 Metals, 633 Nonmetals, 636	
45	SOCIALIST ECONOMY	638
	Manufacturing, 638 Agriculture, 641 Transportation, 648 Soviet Prospects, 650	
	INDEX	653